

THE LIBRARY PRESENTS

Bringing arts activities to
venues across Cambridgeshire
October – December 2024

Look out for our
accessible activities



Supported using public funding by
**ARTS COUNCIL
ENGLAND**

Urban&Civic

**Babylon
ARTS**

Cambridgeshire
CULTURE



Cambridgeshire
County Council

CALENDAR OF EVENTS

Welcome to the Autumn/Winter 2024 brochure for The Library Presents

We would like to thank everyone who helped select events for this season and all our volunteers who help make the programme run so smoothly.

October

			Page
Fri 25	Macbeth (Theatre)	Ely Library	25
Sat 26	Crochet Flower Making Workshop	Soham Library	28
Sat 26	Printing Workshop	Bassingbourn Community Library	31
Sat 26	Macbeth (Theatre)	St Ives Library	25
Sun 27	Crochet Flower Making Workshop	Papworth Library	28
Mon 28	Interactive Musical Story Workshop	St Ives Library	20
Tues 29	Magic Workshop	Whittlesey Library	16
Tues 29	Interactive Musical Story Workshop	Littleport Library	20
Tues 29	LORE (Dance)	Clay Farm Centre	14
Tues 29	Nature Elly (Puppetry)	Arbury Church of the Good Shepherd	21
Wed 30	The Rainbow Butterfly (Dance/Aerial Circus)	March Library	12
Thurs 31	Digital Animation Workshop	Arbury Court Library	33

November

			Page
Fri 1	Murder Mystery Activity	Cambridge Central Library	26
Fri 1	Folk Tales & Fiddles	March Library	19
Sat 2	Crochet Flower Making Workshop	Huntingdon Library	28
Sat 2	Digital Animation Workshop	Sawston Library	33
Sat 2	Decorative Stars Workshop	Chatteris Library	27
Fri 8	Havisham (Theatre)	Wisbech Library	24
Sat 9	Murder Mystery Activity	March Library	26

CALENDAR OF EVENTS

Sat 9	Miniature-Making Workshop	Ramsey Library	30
Sat 9	Paper Theatre Making Workshop	Ely Library	29
Sat 9	Printing Workshop	Barnwell Christ the Redeemer Church	31
Sat 9	Havisham (Theatre)	Papworth Library	24
Sat 16	Magic Workshop	St Neots Library	16
Sat 16	Film Screening, Talk & Dance Workshop	Ely Library	15
Sat 16	Twinpossible (Magic)	Bassingbourn Community Library	17
Sat 23	Printing Workshop	Northstowe Community Cabin	31
Sat 23	Three Little Pigs (Puppetry)	Bar Hill Library	22
Wed 27	Ghost of a Smile! (Theatre)	Ely Library	23
Thurs 28	Ghost of a Smile! (Theatre)	St Neots Library	23
Fri 29	Ghost of a Smile! (Theatre)	March Library	23
Sat 30	Decorative Stars Workshop	Burwell Library	27
Sat 30	Printing Workshop	Ramsey Library	31
Sat 30	Miniature-Making Workshop	Sawston Library	30
Sat 30	The Rainbow Butterfly (Dance/Aerial Circus)	Barnwell Christ the Redeemer Church	12
Sat 30	Folk Tales & Fiddles (Music & Storytelling)	Histon Library	19

December

Page

Sat 7	Mosaic Workshop	Histon Library	32
Sat 7	The Opera Dudes Christmas Special	Whittlesey Library	18
Sun 8	Mosaic Workshop	Wisbech Library	32
Fri 13	Wonderland (Dance)	Huntingdon Library	13
Sat 14	The Opera Dudes Christmas Special	Littleport Library	18

TICKETING INFORMATION

Tickets can be purchased in the following ways:

- Online through www.library.live/the-library-presents
- Phone Babylon ARTS Box Office 01353 616991
- In person from participating libraries (cash only)
- On the door at all activities (subject to availability / cash only)
- By exchanging Digital Time Credits

Ticket Prices

Standard **Performance** price: £8.50

Concession prices for performances:

£5 Students and Senior Citizens (over 66)

£4 Children (under 16), Unwaged and Disabled

For selected family shows tickets are £4, or £15 for a group of four people including at least one child and one adult.

Standard **Workshop** price: £6.50

Concession prices for workshops:

£3 Children (under 16), Unwaged, Disabled, Students, Senior Citizens (over 66).

PLEASE NOTE: ALL CHILDREN UNDER 12 YRS MUST BE ACCOMPANIED BY A RESPONSIBLE ADULT (18+ YRS) WHO HAS PURCHASED A TICKET.

Adults can take part in all workshop activities.

'Pay what you can' tickets

You choose which pricing option is best for you. Think about what the performance is worth to you and what you can afford **then book a ticket**. If you decide to pay more on the day, donation boxes will be available.

(If you pay more you are supporting the whole programme and making sure ticket prices are accessible to as many people as possible).

Pricing options per ticket are: £2 / £4 / £6 / £8 / £10

Companion Tickets

Disabled customers who need a companion to accompany them should book a free companion ticket when booking their own.

TICKETING INFORMATION

Babes in Arms

For events for families and all ages you can bring your baby (under 12 months old). If they require a seat you will need to buy a concession ticket.

Time Credits

A limited number of Digital Time Credit places are available for selected performances; they cannot be used for workshops. A performance ticket costs 1 Time Credit. For details please visit: <https://tempotimecredits.org/use/venue/3230>



Earn Tempo Time Credits by volunteering with groups on the Tempo network. Email time.credits@cambridgeshire.gov.uk for more details.

Digital Badges

You can earn a digital badge for attending any event with The Library Presents.



Digital badges record learning achieved outside of school. They list the skills developed so can be added to personal websites and CVs to showcase your engagement in the arts and help you pursue your chosen career.

To find out more, visit the Region of Learning platform: <https://navigatr.app/about/4/cambridgeshire-and-peterborough-xp>

Refunds

If you cannot attend, please let us know even if you do not wish to have a refund. Places are limited and there is often a waiting list.

To obtain a ticket refund you must inform us at least seven (7) days before the activity takes place: thelibrarypresents@cambridgeshire.gov.uk

Refund requests with less than 7 days' notice will be considered individually.

If an activity is cancelled, you will be informed asap and can choose to get a full refund or to attend on a new date. Please be patient and wait to be contacted.

Refunds / Enquiries contact: thelibrarypresents@cambridgeshire.gov.uk

ACCESSIBILITY AND VENUE INFORMATION

Everyone is welcome

We aim to make our activities as welcoming and accessible as possible. Detailed access information for all activities is on the Events page on our website. If you do not have access to the website please phone or email for details:
Tel: 01223 706720 Email: thelibrarypresents@cambridgeshire.gov.uk

At all our events you can:

- Move around if you need to.
- Use quiet fidget toys (e.g. fidget spinner).
- Use ear defenders or weighted blankets.
- Stand if you need to (please move to the side or back of the audience).
- If strobe lighting, very loud music or sudden bangs are included this will be noted in the information for the event.
- Our audience seating is created using freestanding chairs. They are flexible and we can accommodate users of wheelchairs, mobility aids and service animals.

For some activities we offer additional accessibility measures. Please look out for the following logos in the brochure.



Relaxed performances

Relaxed performances are safe spaces where special consideration is given to the sensory needs of Neurodiverse / Autistic audience members. Neurotypical audiences are also welcome.

- Bring sensory aids, vocalise and move around during the performance.
- There is a quieter space provided with chairs.
- Photos and a video tour of the venue will be on our website so you can become familiar with the space in advance.
- A staff member who has Autism Awareness Training will be present at the event.
- Overhead lights will be off for daytime activities, this is not possible for evening events.



BSL Signed Performances

These are performances where a BSL (British Sign Language) interpreter is provided and where someone who speaks BSL will be at the event to greet audiences.

ACCESSIBILITY AND VENUE INFORMATION



Hearing Loops

Hearing loops are available. Look for the Hearing Loop logo and book one with your ticket if required. For activities without the logo, we can provide a loop if you inform us at least 10 days in advance.



Dementia Friendly

The event is designed to accommodate people living with dementia. Lower audience numbers than at our other events (maximum 35). There is a quiet zone available. Events are during daylight hours.



Audio Described Performances

Trained audio-describer talks to individuals through earpiece creating mental pictures by flashes of suggestive description interjected at appropriate moments. The describer will not speak over actors or significant sound moments / silent and poignant moments.



Touch Tours

If you would benefit from a touch tour before a performance, please contact us when you book your ticket so we can try to arrange this for you. You can bring someone to describe the performance to you for free by booking a (free) companion ticket.

If you have other access requirements that you would like to check with us before booking, please get in touch with us. Please allow as much notice as possible so we can arrange appropriate services.

Contact: thelibrarypresents@cambridgeshire.gov.uk / 01223 706720.

COVID-19

The Library Presents is aware of the continuing presence of Covid 19.

- Library venues have CO2 monitors installed.
- Where possible, venues will be well ventilated.
- Attendees are welcome to wear face coverings if they choose.

ACCESSIBILITY AND VENUE INFORMATION

For detailed venue access and travel information visit the 'venue access information' blog post on our website www.library.live/the-library-presents

Contact us with accessibility or venue questions:

Phone: 01223 706 779 Email: thelibrarypresents@cambridgeshire.gov.uk

Arbury Church of the Good Shepherd Community Hall Mansel Way, Cambridge CB4 2ET. Accessible parking, accessible toilet. Bus stops at Nursery School and Campkin Road both 5 minute walk.

Arbury Court Library 46 – 47 Arbury Road, Cambridge CB4 2JQ. No parking at venue, accessible toilet. Bus stops at Nursery School and Campkin Road both 5 minute walk.

Bar Hill Library Gladeside, Bar Hill CB23 8DY. Accessible parking, no accessible toilet (toilet details on website). Bus stop at Bar Hill Superstore: 5 minute walk.

Barnwell Christ the Redeemer Church Newmarket Road, Cambridge CB5 8RS. Car park at church, accessible toilet. Newmarket Road bus stop 2 minute walk.

Bassingbourn Community Library The Old School Community Centre, High Street SG8 5LD. Limited roadside parking and drop off point, accessible toilet. Bus stop on High Street, 3 minute walk.

Burwell Library Village College, Burwell CB25 0DU. Accessible parking, accessible toilet. Guyatt Court bus stop 3 minute walk.

Cambridge Central Library 7 Lion Yard CB2 3QD. Accessible parking in Grand Arcade car park, accessible toilet, access via lifts. St Andrews & Street Drummer Street bus stations, 4 minute walk. Cambridge train station 26 minute walk.

Chatteris Library 2 Furrowfields Rd, Chatteris PE16 6DY. Accessible parking, accessible toilet. Ash Grove bus stop 1 minute walk.

Clay Farm Centre Hobson Square, Trumpington, Cambridge CB2 9FN. Accessible parking, accessible toilet (radar key). Trumpington Busway 4 minute walk.

Ely Library 6 The Cloisters CB7 4ZH. No parking at venue, lift to access library, accessible toilet. Bus stops at Market Street and Newnham Street, both 3 minute walk. Ely train station 18 minute walk.

ACCESSIBILITY AND VENUE INFORMATION

Histon Library School Hill CB24 9JE.

Parking at shops, accessible toilet. School Hill bus stop 1 minute walk.

Huntingdon Library Princes Street PE29 3PA.

Accessible parking on street, accessible toilet - Radar key.

Huntingdon Bus Station 1 minute walk.

Littleport Library Victoria Street CB6 1LU.

Accessible parking in public car park (2 minute walk), accessible toilet.

White Hart Lane bus stop 1 minute walk.

March Library City Road PE15 9LT.

Accessible parking, accessible toilet. Grays Lane bus station 10 minute walk.

March train station 28 minute walk.

Northstowe Community Centre (The Cabin) Pathfinder Way CB24 1AU.

Accessible parking, accessible toilet. Longstanton Park and Ride 8 minute walk.

Papworth Library Pendrill Court, Ermine St North, Papworth Everard CB23 3UY.

Accessible parking at shops, accessible toilet. Elm Way bus stop 1 minute walk.

Ramsey Library 25 Great Whyte PE26 1HA.

Accessible parking on road, accessible toilet. New Road Bus Station 1 minute walk.

Great Whyte stop 3 minute walk.

Sawston Library 41 New Road CB22 3BP.

Accessible parking, accessible toilet. Babraham Road bus stop 2 minute walk.

Soham Library 7 Clay St, Soham, CB7 5HJ.

Accessible parking, accessible toilet. Brook Dam Lane bus stop 4 minute walk.

St Ives Library 4 Library Row, Station Road PE27 5BW.

Accessible parking outside Waitrose, accessible toilet. St Ives bus station 2 minute walk. Park & Ride 9 minute walk.

St Neots Library 1 Priory Lane PE19 2BH.

Accessible parking, accessible toilet, lift to 1st floor. Market Square bus stops A to E, 3 minute walk. St Neots Train station 26 minute walk.

Whittlesey Library 31 – 35 Market Street PE7 1BA.

Accessible parking on street, accessible toilet. Whitmore Street bus stop 2 minute walk. Whittlesey train station 18 minute walk.

Wisbech Library Ely Place PE13 1EU.

Accessible parking on street, accessible toilet. Horsefair bus station 5 minute walk.

You decide what The Library Presents!

Did you know that The Library Presents events are selected by the public?

You are invited to make selections from a menu that includes theatre, music, dance, comedy, puppetry, magic and more.

You can also tell us what ages you would like the events to be suitable for and your access requirements.

The brochure you are reading contains events that were selected by hundreds of Cambridgeshire residents.

We pride ourselves on programming high quality events that the public want to see, and your input is vital in making the scheme the success it is. We would like to thank all the people who have given us their choices...and we need more!

The more feedback we receive, the more we can ensure that libraries have the events their communities want.

How do I make my selections?

- View a menu in your local library, complete a selection slip and pop it in a The Library Presents selection box.
- Visit www.library.live/the-library-presents to watch film clips of what's on offer and make selections online.
- If you are a community group, a project coordinator can visit to talk about the menu, show you clips and collect your choices. To arrange a visit please email thelibrarypresents@cambridgeshire.gov.uk

Look out for the next selection phase in the new year.

We will publicise news about when the next selection is open, or you can join our mailing list (see back cover) and we'll let you know about selection times. You will also be notified about ticket sales for forthcoming programmes so you can book early for the events you're interested in

...and thank you for your lovely comments.

'An inspiring programme.'

'Thank you, another brilliant live performance. So good - so local.'

'Lovely programme - very accessible.'

'Absolutely wonderfully organised and very welcoming!'

'Absolutely brilliant events at a great price. Please keep it up.'

'Another amazing event, would definitely recommend to others.'

'The breadth of the programme is its strength.'

VOLUNTEERS NEEDED

Can you help us with any of the following?

- **Setting up spaces** (putting out chairs, tables & backdrops)
- **Stewarding** (welcoming people, checking tickets, collecting feedback)
- **Refreshments** (serving interval drinks or making hot drinks at workshops)
- **Promotion** (distributing brochures and posters or posting on social media)
- **Technical Support** (setting up basic sound and light equipment)

To find out more please contact us:
thelibrarypresents@cambridgeshire.gov.uk



SUPPORTED BY

Urban&Civic

Urban&Civic are proud to support The Library Presents programme, and ensure that across the County people can enjoy, share and learn from a great programme of cultural and creative activities. Our libraries are now vibrant community spaces, in the heart of our market towns and cities. In each of the 3 developments we are bringing forward in the county – Waterbeach, Alconbury Weald and Wintringham at St Neots – we will be putting libraries

at the heart of the civic centres, to provide the place for support, events and activities, learning and sharing that is so important to people and places. So whether it is poetry, plays, art or music; story telling about the past or creative thinking about the future; we hope everyone finds some great activities to get involved with in their local community and inspiration from the creative talent around us.





The Rainbow Butterfly

Maja flies all the way to the moon with wings that sparkle and shimmer! This show celebrates how unique we all are using creativity, carnival, aerial circus, beatbox, & Hip Hop dance. A family experience from the **Ella Mesma Company**, blending traditional storytelling with dance. Audience members will be invited to take part in the show, make sounds and have fun!



March Library

Wednesday 30 October 3pm (Doors open 2.45pm)

Barnwell: Christ the Redeemer Church

Saturday 30 November 11am (Doors open 10.45am)

Running time:

35 minutes followed by 20 minute stay and play

Suitable for: Families with children aged 3+ yrs

Check it out: www.ellamesma.co.uk

Tickets: Pay what you can

(Booking required – see page 4)

Accessibility Information

Full accessibility and venue information on pages 6 & 7.



Relaxed Performance

Special consideration is given to the sensory needs of Neurodiverse / Autistic audience members. Ear defenders available to borrow.

Follow the QR code for easy read information of what happens in the show, what sound there is, who performs and what to expect.



'So much fun: a beautiful bonding and reaffirming experience for multiple heritage children.'

Corinne Bailey Rae
(Singer/songwriter)

Wonderland

Spiltnilk Dance present a fun filled festive show featuring snowball fights, tap dancing, violins, shiny bows and much much more! A feast for the senses, blending live music, dance and extravagant costumes. After the show, stay and decorate some gingerbread – good, sweet, sticky fun!



Huntingdon Library

Friday 13 December Times to be confirmed.
Please check the website

Running time: 1 hour followed by 20 minute
gingerbread decorating

Suitable for: Adults and Older adults

Check it out: www.spiltnilkdance.co.uk

Tickets: Pay what you can

(Booking required – see page 4)

Accessibility Information

Full accessibility and venue information on pages 6 & 7.

The show includes invitations for audiences to sing, dance and play along with performers. Performers interact with audience throughout and may invite you to wear or hold props.



Relaxed Performance

Special consideration is given to the sensory needs of Neurodiverse / Autistic audience members.



Hearing Loops will be available.



Dementia Friendly

DANCE

LORE

A super-physical, athletically inspiring dance performance. Dive into a pagan world of gods, demons and humans by award winning **James Wilton Dance**. LORE is about connection to nature and the feel of energy that flows between our bodies and the earth. The unique soundtrack by Michal Wojtas draws influence from Viking, Celtic and Slavic folk music.



Accessibility Information

Full accessibility and venue information on pages 6 & 7.

Music is loud, or tense in parts and helps tell the story.

Masks are used by some dancers. Some dancers have runes painted on their face. Costumes are ancient looking and marked with symbols. It finishes with a sacrifice, done with gentle movements and care, it's symbolic of the cycle of life.

Clay Farm Centre

Tuesday 29 October

7.15pm (Doors open 6.45pm)

Running time: 1 hour followed by 15 minute Q&A

Suitable for:

Adults and children aged 8+ yrs

Check it out:

www.jameswiltondance.com

Tickets: £8.50 / £5 / £4

Film Screening, Talk & Dance Workshop

Journey through the history of dance with **Kabecca Films**. The duo bring the seldom-heard voices of women over 50 to audiences. A screening of three short films, talk and Q&A followed by a short and simple movement activity.

Films featured:

Gillian: Reflecting on the pressure of striving for perfection as a professional ballerina.

Kindred: A lockdown documentary celebrating the unity and strength of the 'Retrospectif'. An older adults dance company.

Twenty, Forty, Sixty: 63-year-old Lisa tells her story of dancing through life. Exploring the evolution of dance and its positive impact.



Ely Library

Saturday 16 November 1.30pm

Running time: 2 hours

Suitable for: Adults (minimum age 16 yrs)

Check it out:

<https://kabeccafilms.wixsite.com/2018>

Tickets: £6.50 / £3

Accessibility Information

Full accessibility and venue information on pages 6 & 7.

No dance experience is required. Movement can be done seated or standing.

All movements can be amended to accommodate your own mobility needs.

Film topics include grief and anxiety.

Films will be subtitled.

Magic Workshop

Start your career in magic today! Learn to vanish an object, make it reappear in creative places, card magic and more. Twin magicians **Kane & Abel** pass on decades of experience gained after taking on the family business from their grandfather. Spark a new fun hobby, learn some skills, and wow your friends.



Whittlesey Library

Tuesday 29 October 2.30pm

St Neots Library

Saturday 16 November 10am

Running time: 2 hours

Suitable for:

Adults and young people aged 8+ yrs

Tickets: £6.50 / £3

Accessibility Information

Full accessibility and venue information on pages 6 & 7.

Beginner level tricks. If you learn a trick quickly, more advanced levels will be taught.

One-on-one help will be available.

Twinpossible

Kane & Abel return with magic and comedy based on being twins. The brothers seamlessly move between stand-up comedy, magic pieces and theatrical illusions set to music. A show that can be thoroughly enjoyed by adults and youngsters alike.



'Seriously impressive'

BBC Radio Bristol

Bassingbourn Old School Community Centre / Library

Saturday 16 November

2pm (Doors open 1.40pm)

Running time: 90 minutes, plus interval

Suitable for:

Adults and children aged 6+ yrs

Check it out:

www.kaneandabelmagic.com

Tickets: £4 / £15 (Family Saver)

Accessibility Information

Full accessibility and venue information on pages 6 & 7.

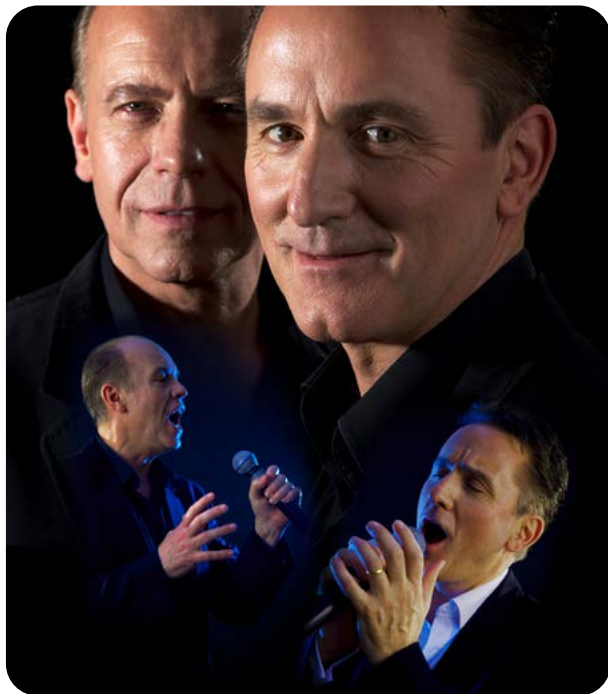


Hearing Loops will be available.

Performers will interact with the audience. If you are not comfortable with this, please tell staff on arrival so the performers can be informed.

The Opera Dudes Christmas Special

A show full of seasonal cheer with something for everyone - wonderful singing, audience participation and ridiculous sketches. Yule be laughing till your sides hurt! Music includes operatic favourites, west end showstoppers, classical piano & Christmas favourites.



Accessibility Information

Full accessibility and venue information on pages 6 & 7.



Hearing Loops will be available for this show

Amplified music with low volume settings.

Optional audience interaction (e.g. clapping along).

Performers move towards and joke with audience on some numbers.

Whittlesey Library

Saturday 7 December 7pm (Doors open 6.45pm)

Littleport Library

Saturday 14 December 7pm (Doors open 6.45pm)

Running time: 90 minutes, plus interval

Suitable for: All ages

Check it out: www.operadudes.com

Tickets: £8.50 / £5 / £4

*'Fantastic show,
fantastic voices.
I thought we were at
the Palladium.'*
Audience comment

Folk Tales & Fiddles

An evening of local folk tales and brilliant contemporary folk music. **Marianne Powell**, local storyteller, will be telling two Fenland tales – spooky, mysterious and uplifting. **Orphean Sprig**, instrumental folk band, will bring their trademark arrangements creating a rich texture and original sound.

Expect foot-tapping tunes, fascinating tales and a hint of audience participation (for those who want it).



March Library

Friday 1 November 7pm (Doors open 6.45pm)

Histon Library

Saturday 30 November 7pm (Doors open 6.45pm)

Running time: 90 minutes, plus interval

Suitable for: Adults and young people 12+yrs

Check it out: www.orpheansprig.com

Tickets: £8.50 / £5 / £4

Accessibility Information

Full accessibility and venue information on pages 6 & 7.



Relaxed Performance

Special consideration is given to the sensory needs of Neurodiverse / Autistic audience members.

Amplified music with low volume settings. Optional audience interaction (e.g. clapping along).

Interactive Musical Story Workshop

A thrilling interactive musical storytelling based on an enchanting fairytale. Join the magical underwater adventures of Sadko the Bard, conjure up a storm, and dance away at the Sea King's court! Pop gigantic bubbles, explore exciting story props and all the instruments featured. Performed by award-winning singer-songwriter **Daria Kulesh**. Followed by an art activity inspired by the story.



Accessibility Information

Full accessibility and venue information on pages 6 & 7.



Relaxed Workshop Special consideration is given to the sensory needs of Neurodiverse / Autistic participants.

Props include: fans, bubbles, ribbon rings, scarves, soft toys.

Instruments include: drums, tambourines, shruti box, chimes, castanets, slide whistle. Participant interaction is always with permission. You will be offered safe tambourines to join in. Participants help make a loud storm noise. The character falls off his ship, but wakes up unhurt straight away.

St Ives Library

Monday 28 October 11am

Littleport Library

Tuesday 29 October 2pm

Running time: 90 minutes (30 minute storytelling, 30 minutes exploring instruments, 30 minute art activity)

Suitable for: Families with children aged 4+ yrs

Tickets: £3 (Adults and children require tickets)



Nature Elly

An exciting family puppet show from **Barnpot Theatre**. Elly runs the best farm, but not everything is going to plan. The corn has been trampled, the apples have vanished and there's hay everywhere! Help Elly and Bob the Pheasant save the harvest and discover the mystery animal hiding in the hay-stack. There is a pre-show workshop of drama games and art activity.



*'Outstanding...
A must see!'*

Audience
comment

Arbury: Church of the Good Shepherd Tuesday 29 October

10.15am **Workshop** (Doors open 10.10am)

11am **Performance**

Running time: 45 minute workshop (pre-show),
40 minute show, 5 minute meet the puppets

Suitable for: Families with children aged 2 - 5 yrs

Check it out:

www.youtube.com/@barnpottheatre789

Tickets: £4 / £15 (Family Saver)

Accessibility Information

Full accessibility and venue information on pages 6 & 7.



Relaxed Performance

Special consideration is given to the sensory needs of Neurodiverse / Autistic audience members.



British Sign Language

Scan QR code
for BSL Flyer



Hearing Loops available.



Touch Tour Pre show Touch
Tour available on request.

3 Little Pig Tails

Garlic Theatre present a fresh and funny version of the classic story of The Three Little Pigs set in Paris. A grumpy old wolf is a chef who sets out to find some pigs' tails for his soup. Funny and warm-hearted to make you squeal with laughter. Bristling with puppets, live music and lots of joining in.



Bar Hill Library

Saturday 23 November 3pm (Doors open 2.45pm)

Running time:

45 minutes plus 15 minute meet the puppets.

Suitable for:

Families with children aged 3 - 8 yrs

Check it out:

www.garlictheatre.org.uk

Tickets:

£4 / £15 (Family Saver)

Accessibility Information

Full accessibility and venue information on pages 6 & 7.

Funny loveable characters. Some parts might be a bit scary but everything is ok in the end.

Plenty of interaction – making noises, cheering, clapping etc.

Puppets may approach the audience during the meet the puppets activity.

Ghost of a smile!

Two of Charles Dickens' creepy tales – with a comic twist. In 'The Queer Chair' a traveller encounters a ghostly chair at a haunted inn. In 'The Ghosts of the Mail', a tipsy reveller in a deserted Edinburgh carriage-works is spirited away! Two yarns to chill and charm. Adapted by **Gavin Robertson** and performed by **Nicholas Collett**.



Accessibility Information

Full accessibility and venue information on pages 6 & 7.



Hearing Loops will be available for this show.

Ely Library

Wednesday 27 November 7.30pm (Doors open 7.15pm)

St Neots Library

Thursday 28 November 7.30pm (Doors open 7.15pm)

March Library

Friday 29 November 7pm (Doors open 6.45pm)

Running time: 70 minutes, plus interval

Suitable for: Adults and young people aged 12+ yrs

Check it out: www.gavinrobertson.com

Tickets: £8.50 / £5 / £4

Havisham

Miss Havisham is in town! Come and meet Charles Dickens' most Gothic character in the flesh. Discover her previously untold imagined back-story. Why does she wait forever at her wedding feast for a husband who will never arrive? Delve into Miss Havisham's dark, fractured world and live the experiences that drove her to the brink and over the edge of insanity. Presented by **Emul8 Theatre**.



Accessibility Information

Full accessibility and venue information on pages 6 & 7.



Hearing Loops will be available.

Themes of identity, justice and betrayal.

References to: childhood trauma, sexual assault, emotional abuse and coercive control.

Wisbech Library

Friday 8 November 7.30pm (Doors open 7pm)

Papworth Library

Saturday 9 November 4pm (Doors open 3.30pm)

Running time: 75 minutes, followed by 15-minute Q&A

Suitable for: Adults and young people 12+yrs

Check it out: www.heatheralexandershows.co.uk/havisham

Tickets: Pay what you can (Booking required – see page 4)

'Stunning and captivating performance, the best one-person show I've seen'

Ramsey Library audience member

THEATRE

Shakespeare in a Suitcase – Macbeth

The story of Macbeth in 50 minutes, with two actors, one musician, and a few items from a suitcase! Comedy and tragedy, fast action and an original soundtrack. With help from the audience, **New International Encounter Theatre** bring this big and gruesome story to life in a funny and accessible way. Perfect for first timers as well as lovers of Shakespeare.



Accessibility Information

Full accessibility and venue information on pages 6 & 7.

Contains themes of death and depictions of murder and violence. Features fake blood and haze. Sounds include drumming, live music and spooky voices. Sometimes Macbeth asks the audience questions. Please sit to the sides or back if you are uncomfortable with this.

Ely Library

Friday 25 October 7.30pm (Doors open 7.15pm)

St Ives Library

Saturday 26 October 6.45pm (Doors open 6.30pm)

Running time: 50 minutes plus 15 minute post show Q & A

Suitable for: Adults and children 8+ yrs

Check it out: www.nie-theatre.com

Tickets: £8.50 / £5 / £4

‘Great entertainment’

Papworth Library
audience member

MURDER MYSTERY ACTIVITY

The Library Lock-In

An interactive murder mystery experience with writer and storyteller **Gaby Songui**. The story is about two teenage detectives. Step into their shoes as they try to solve the murder of their friend.

Participants will be put into teams (these could be family teams or teams assigned during the workshop). Maximum 5 people per team.

Each team will sit at a table: listen to their story, solve puzzles, follow clues and sift through evidence.



Cambridge Central Library

Friday 1 November 2pm

March Library

Saturday 9 November 1.30pm

Running time: 2 hours

Suitable for: Adults and young people aged 11+ yrs

Tickets: £6.50 / £3

Accessibility Information

Full accessibility and venue information on pages 6 & 7.

Some understanding of written and spoken English is needed.

Decorative Stars Workshop

Weave and fold ribbon to make spectacular eight-pointed Scandinavian star decorations. Susan from **Mill House Millinery** will guide you through the process. Use them to decorate your home for any celebration you wish.



Chatteris Library

Saturday 2 November 2pm

Burwell Library

Saturday 30 November 2pm

Running time: 2 hours

Suitable for:

Adults and young people aged 10+ yrs

Tickets: £6.50 / £3

Accessibility Information

Full accessibility and venue information on pages 6 & 7.

Scissors and needles may be used. Susan will provide help to those who need it.

You may choose to secure your folds with stitches, but this is not essential.

Crochet Flower Making

Ideal for those who know basic crochet stitches and want to progress. Designer **Claire Montgomerie** will help you play with colour and unusual yarns to crochet beautiful floral motifs. These will be perfect for creating flower crowns, corsages, present toppers, hair accessories and more.



Soham Library

Saturday 26 October 10.30am

Papworth Library

Sunday 27 October 4pm

Huntingdon Library

Saturday 2 November 10.30am

Running time: 2 hours

Suitable for: Adults and young people aged 8+ yrs with basic crochet skills.

Tickets: £6.50 / £3

Accessibility Information

Full accessibility and venue information on pages 6 & 7.

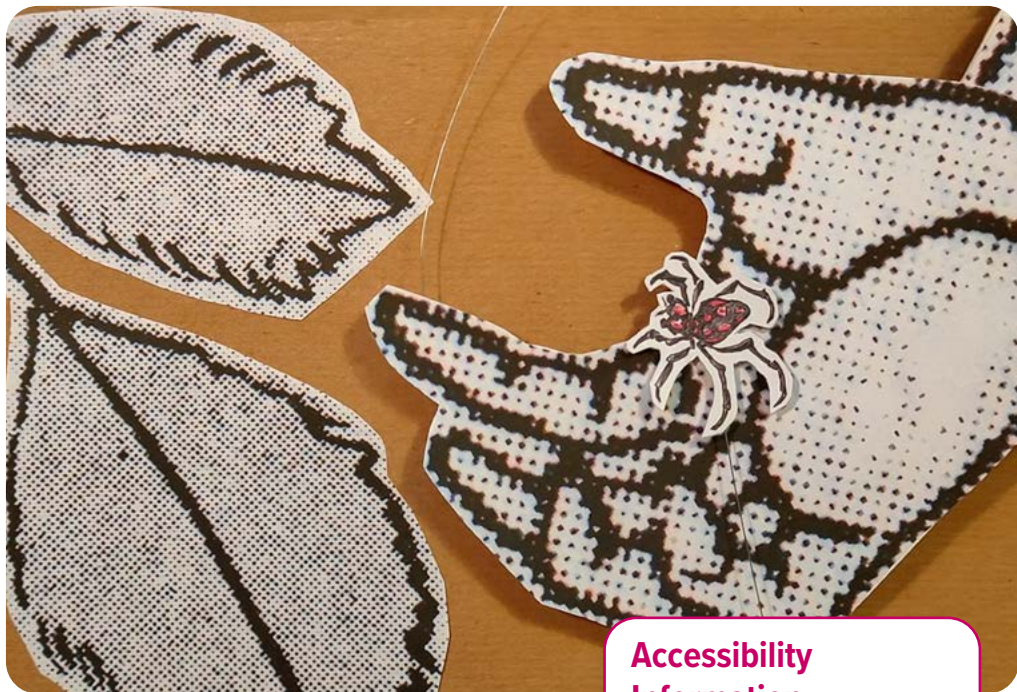
Some basic crochet experience required.

Ideally double crochet, half treble and treble crochet stitches.

Paper Theatre Making

Puppeteer **Aya Nakamura** will give a performance of Kamishibai (Japanese Paper Theatre) and introduce you to Paper Theatre techniques. Then create your own paper theatre box to tell your story with an illustrated back-drop of collaged images.

Please bring a story that you want to tell and your favourite images to cut out.



Ely Library

Saturday 9 November 1.30pm

Running time: 2 hours

Suitable for: Adults and children aged 7+ yrs

Tickets: £6.50 / £3

Accessibility Information

Full accessibility and venue information on pages 6 & 7.

Scissors will be used.

People who have difficulty using these may want to bring a companion for assistance (free companion tickets available).



Miniature-Making Workshop

Learn to make miniature houses, landscapes, or furniture. Use the templates, tools and sustainable materials provided. Decorate your creations with paint or fabric. Artist **Sonia Panova** will share her love of detail and give tips on sustainable crafting at home.

This workshop is ideal for those interested in: model making, dioramas, doll houses and eco-friendly crafting.



Ramsey Library

Saturday 9 November 2pm

Sawston Library

Saturday 30 November 1pm

Running time: 2 hours

Suitable for:

Adults and young people aged 10+ yrs

Tickets: £6.50 / £3

Accessibility Information

Full accessibility and venue information on pages 6 & 7.

This workshop caters for all skill levels.

Some elements need good finger control, if you need support with this please book a companion ticket.



Printing Workshop

Learn Gel-plate printing from artist **Syrah Jade Arnold**. Explore items from the natural world, colours and patterns and create through experimentation. Capture beautiful textures and shapes of leaves, shells and feathers. You'll be amazed at the unique cards, wrapping paper and prints you will make. All materials provided.



Bassingbourn Community Library
Saturday 26 October 2pm

Barnwell Christ the Redeemer Church
Saturday 9 November 10.30am

Northstowe Community Cabin
Saturday 23 November 10.30am

Ramsey Library
Saturday 30 November 2pm

Running time: 2 hours

Suitable for: Adults and children aged 6+ yrs

Tickets: £6.50 / £3

Accessibility Information

Full accessibility and venue information on pages 6 & 7.

Accessible to people of all abilities, the artist will happily accommodate disabled participants. Companion tickets are available to disabled participants.



Mosaic Workshop



Accessibility Information

Full accessibility and venue information on pages 6 & 7. Tiles will be glued onto a base which you grout and polish.

Some tiles can have rough or sharp edges so take care when using them.

All cutting of the tiles is done by the artist.

Histon Library

Saturday 7 December 2pm

Re-cycle and re-purpose to create a unique mosaic masterpiece. Guided by professional mosaic artist **Carolyn Ash** you'll design, make and grout your own work of art. Arrange shells, tiles, mirror, pottery and beads. Bring along your own broken treasures to include!

Running time: 2 hours

Suitable for: Adults and children aged 3+ yrs

Tickets: £6.50 / £3

Wisbech Library

Sunday 8 December Drop in between 11am and 1pm

Contribute to community mosaic being created as part of Wisbech Christmas Fayre. Choose, attach and grout colourful tiles. The finished piece will be displayed in the library.

Suitable for: All ages (3+ yrs)

Tickets: FREE (Donations welcome)

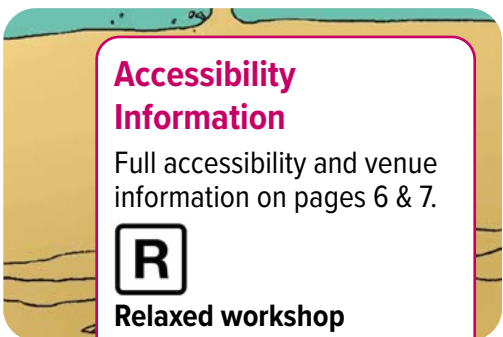
'Amazing experience!'

'Fun workshop, pitched at the right level'

Participant comments

Digital Animation Workshop

Learn digital techniques from expert animator **Edalia Day**. Create your own characters and stories using simple applications. Gain some cool skills to take home with you to use over and over. A fun, laid back workshop suitable for all ability levels from absolute beginner to seasoned pro. We'll have a selection of iPads to use with some simple homemade styluses, or you can bring your own tablet or smart phone to use.



Accessibility Information

Full accessibility and venue information on pages 6 & 7.



Relaxed workshop

Special consideration is given to the sensory needs of Neurodiverse / Autistic audience participants.

Work to your own level. You will need basic skills to draw simple shapes and simple tasks on a phone or tablet. You will be taught how to use anything that is new to you.

Arbury Court Library

Thursday 31 October 2pm

Sawston Library

Saturday 2 November 2pm

Running time: 2 hours

Suitable for: Adults and children aged 6+ yrs

Example animation: <https://tinyurl.com/yeyxtnay>

Tickets: £6.50 / £3

Discover all your library has to offer – it's free to join and free to use

Your library offers more than you might think

We welcome you to browse and borrow our collection, access our PCs and Wi-Fi for free and use our space to study, meet, share or just relax.

You can also borrow from our huge range of eBooks, eAudio, eMagazines and eNewspapers from home or on the go.

Don't miss out!

Anyone who lives or works in Cambridgeshire can join Cambridgeshire Libraries. It's free!

Join today!

Scan the QR code or drop in to your nearest library and speak to a friendly member of staff to register for free. For more information, call 0345 045 5225.



“My library means everything, I would be lost without it.”



“The library has been fantastic for me establishing myself in a new community, my life would be much less full without it.”



Creating a greener, fairer, and more caring Cambridgeshire

Because we care about the planet, The Library Presents:

- Uses local venues, so participants don't have to travel too far for great quality arts events.
- Utilises our existing buildings by holding events when libraries are usually closed.
- Uses no plastic bottles and only serves refreshments that come in recyclable packaging.
- Is switching to carbon free heating, with many buildings operating on air source heat pumps.
- Uses recyclable paper.
- Does not use paper tickets.
- Has reduced the number of printed brochures.
- Programmes events with environmental themes
- Works with artists to reduce their carbon footprint.



Look out for the green leaf logo which highlights our activities with environmental themes.

Cambridgeshire Libraries recognise that we need to play our part in contributing to wider local, national and international climate change efforts. As a library service we understand that we are in a position where we can influence, inspire and encourage others to lead more sustainable lifestyles.



THE LIBRARY PRESENTS

The Library Presents brings quality arts activities into towns and villages across Cambridgeshire. The programme is run by Cambridgeshire County Council, working in partnership with Babylon ARTS and is funded by Arts Council England.

To join our mailing list for monthly updates please visit: www.library.live/the-library-presents

ARBURY ● BAR HILL ● BARNWELL ● BASSINGBOURN
BURWELL ● CAMBRIDGE CENTRAL ● CHATTERIS
CLAY FARM ● ELY ● HISTON ● HUNTINGDON
LITTLEPORT ● MARCH ● NORTHSTOWE ● PAPWORTH
RAMSEY ● SAWSTON ● SOHAM ● ST IVES ● ST NEOTS
WHITTLESEY ● WISBECH

Find out more about the programme and how you can get involved at:

 facebook.com/thelibrarypresents

 [@TheLibraryPresents](https://www.instagram.com/TheLibraryPresents)

www.cambridgeshire.gov.uk/arts

For a plain text version of this brochure visit the website www.library.live/the-library-presents

To request this booklet in another language please contact
Lai pieprasītu šo brošūru jūsu valodā, lūdzu, sazinieties ar
আপনার নজিরে ভাষায় এই পুস্তকিকার্টা পতেহেলা, অনুগ্রহ করে
নমিন্‌লিখিতি ব্‌যক্‌তরি সাথযো.াগাযো.াগ করবনে
如需要這本用你的語言寫の册子, 請聯絡
Prašom susisiekti jeigu pageidaujate šios brošiūros jūsų kalba
Osoby, które chciałyby otrzymać broszurę w swoim ojczystym
języku prosimy o kontakt

thelibrarypresents@cambridgeshire.gov.uk



This programme is 100% recyclable. Please dispose of responsibly.

Front cover images: LORE, Macbeth, Nature Elly.

Back cover images: The Rainbow Butterfly, Havisham, Crochet Flower Making.